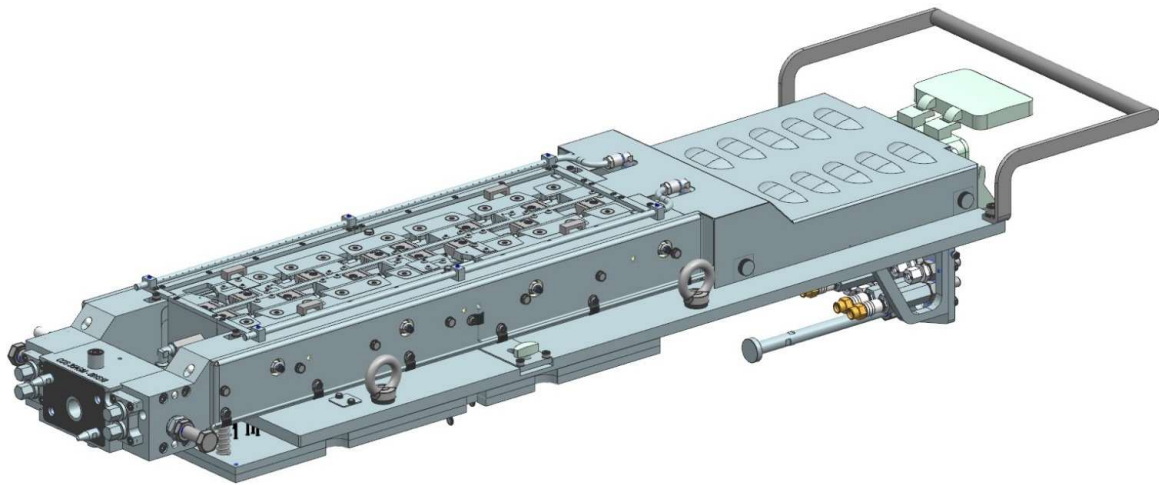
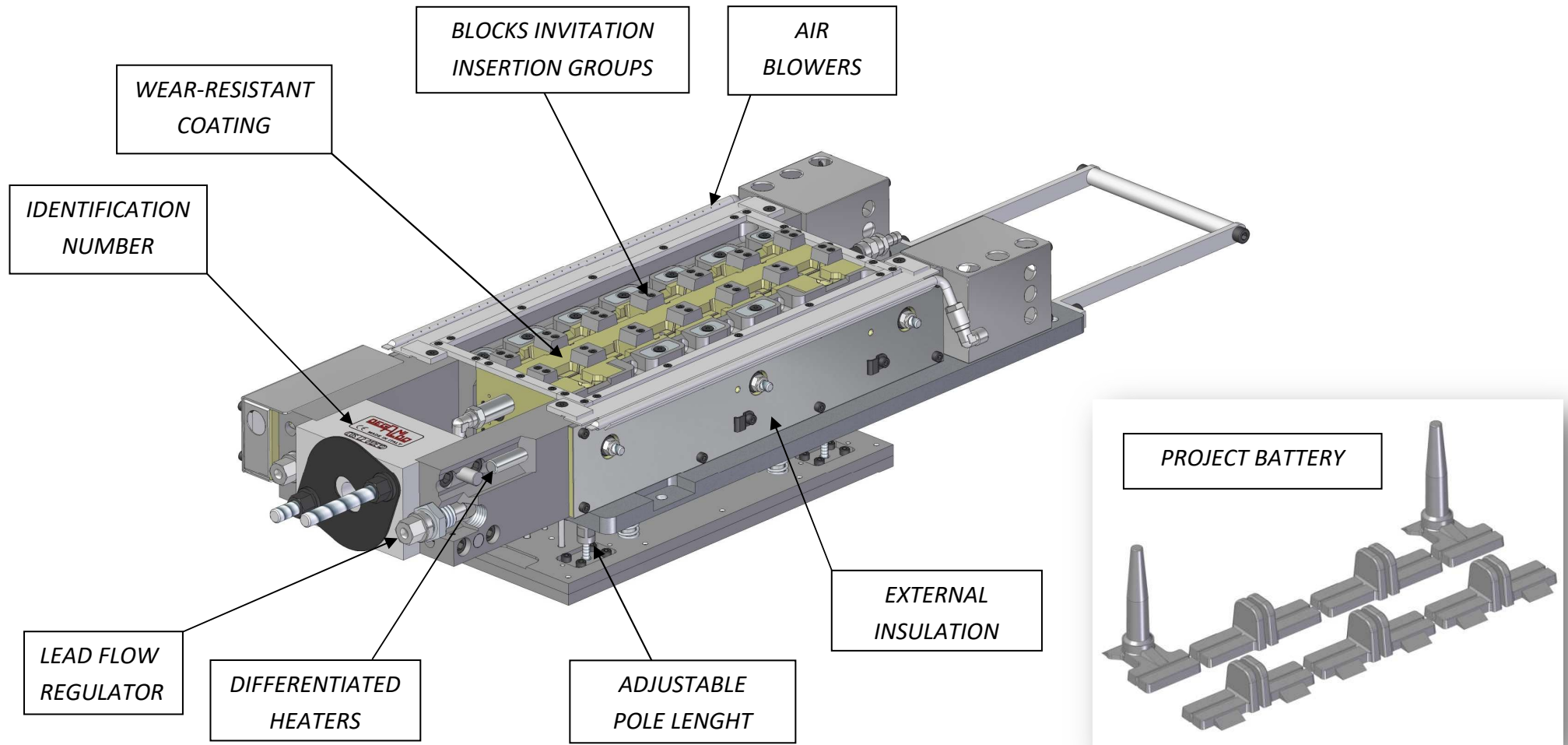


COS MOULD



- Mould layout and connections dimensions in accordance with customer specification.
- Straps and battery layout design on demand.
- Tempered ejector pins and pole extractors.
- Adjustable pole length.
- Cooling holes and connection pipes in the mould.
- Air blowers.
- Electric heaters (6 pieces: 2 for the head and 4 for the manifolds) with 1,5 protected cable.
- Thermocouples.
- Identification number, engraved on the mould.
- Heaters differentiated power for a less ΔT .
- External insulation for a faster heating and less heat dissipation.
- Four wear-resistant coatings available (on request).
- Blocks invitation insert groups (on request).
- Lead flow regulators (on request).



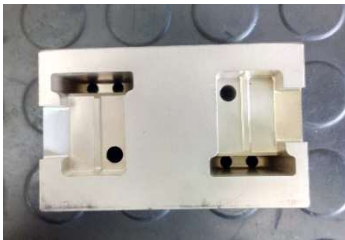
WE RESERVE ANY POSSIBLE MODIFICATIONS

TECHNICAL CHARACTERISTICS OF THE MOULD SPECIAL COATINGS

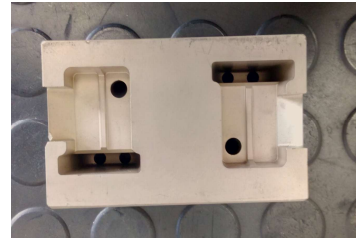
“Y” - “Y PLUS” - “B” - “B PLUS”

CODE	Y	Y PLUS	B	B PLUS
<i>COLOUR</i>	<i>Lemon yellow</i>	<i>Opaque lemon yellow</i>	<i>Midnight blue anthracite</i>	<i>Opaque midnight blue anthracite</i>
<i>HARDNESS (HV)</i>	4150	4500	5450	5750
<i>THICKNESS</i>	1 - 8 micron	1 - 8 micron	0,5 - 15 micron	0,5 - 12 micron
<i>MAX WORKING TEMP.</i>	925°C	925°C	1200°C	1200°C
<i>COEFFICIENT OF FRICTION</i>	0,19	0,19	0,07	0,07

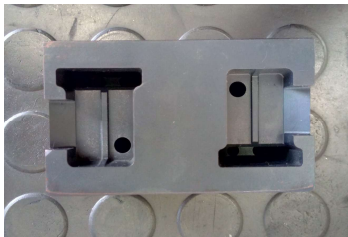
Y:



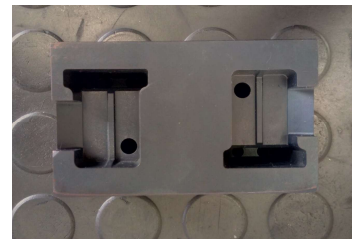
Y PLUS:



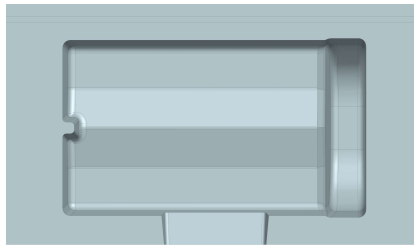
B:



B PLUS:

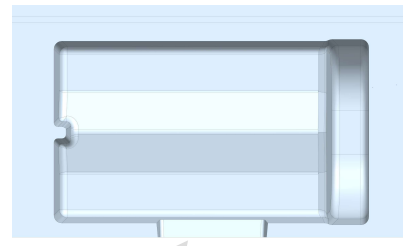


STANDARD MOULD CAST IRON



3 mm

SPECIAL STEEL MOULD



1 mm

- REDUCED FRAGILITY
- REDUCED POROSITY
- REDUCED WEAR
- REDUCED LEAD ENTRY GATE

CAST IRON MOULD / STEEL MOULD WITH WEAR-RESISTANCE COATING:

Y:



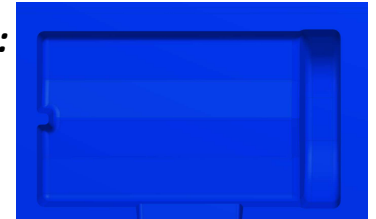
Y PLUS:



B:



B PLUS:



- HIGH SURFACE HARDNESS
- POROSITY FREE
- REDUCED WEAR
- HIGHER RESISTANCE TO FLUXES
- GREATER CORROSION RESISTANCE
- LOWER FRICTION COEFFICIENT